

WE DRIVE MOTION



ELPROM  
HARMANLI

blvd. Assen Yordanov 14, Sofia 1592  
tel. +359 2/ 9651 220  
fax: +359 2/ 9651 234  
sales@elprommotors.com  
todorboyadjiev@elprommotors.com

Elprom Harmanli JSCo is a leading Bulgarian-based AC electric motor manufacturer.

Our success story is based on several pillars that we strongly pursue:

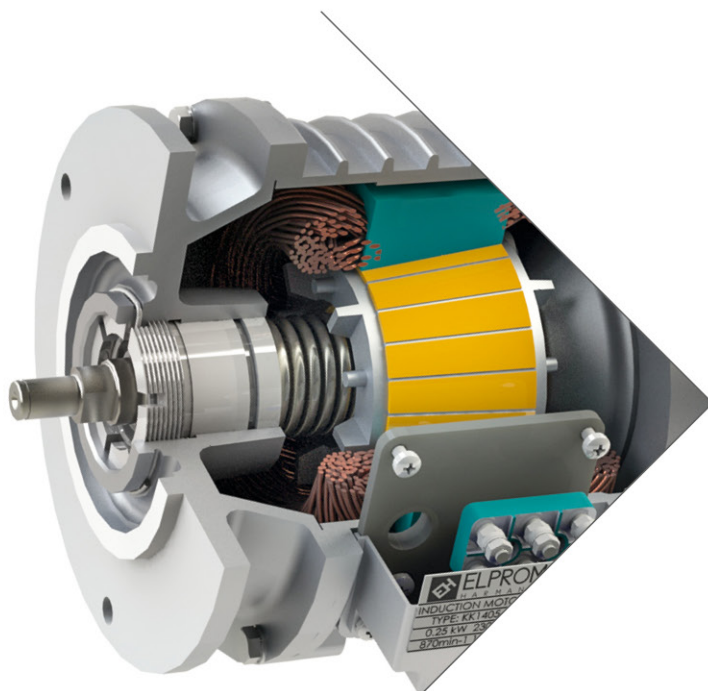
**QUALITY,  
FLEXIBILITY**

and

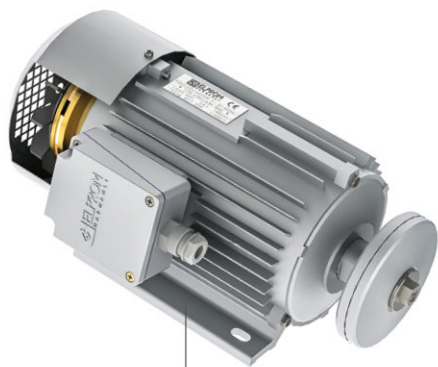
▶ **CUSTOMER  
SPECIFIC  
APPROACH.**

Through our expertise, highly skilled team and continuous improvement processes, we add value to our customers' businesses and provide a hassle-free service.

If looking for a customized solution for your industrial automation, we are the right partner for you.



[www.elprommotors.com](http://www.elprommotors.com)

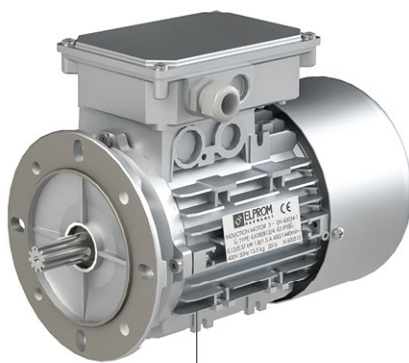


## SAW-ARBOR MOTORS

Series A, AER, AX

### For band and circular saws

- » Frames 90, 100, 112, TEFC
- » Rating 3~10kW, single- or 3-phase, 50Hz
- » 2-, 4-poles
- » Cost-effective aluminum body
- » Cast-iron end-shields for excessive bearing radial loads
- » S6-40% duration
- » B3, B14 mounting
- » Spring-applied brake optional
- » Shaft with saw blade flange
- » CE marking

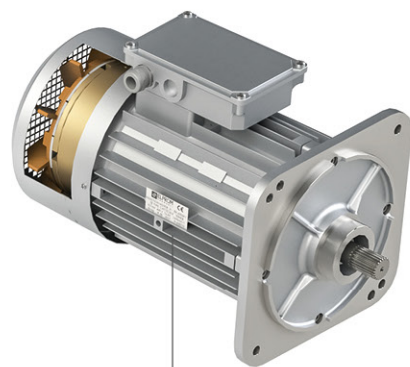


## TRAVELLING MOTORS

Series KAT, KAT-35, KAT-42, KAT-53

### For driving trolley & bridge motions

- » Rating 0.18~4kW and above
- » IEC frames 63, 71, 80 and 90
- » Poles 2, 4, 6, 12, 8/2, 12/4
- » Voltage  $\Delta/Y$  230/400V 50/60Hz or as required
- » Brake coil DC voltage 0.45 UAC or special coil on request
- » A terminal box located rectifier
- » Braking torque 1.5 x rated torque or higher
- » Protection up to IP65
- » Insulation F, H
- » Rated at an ambient of 40 deg C
- » IC410, IC411 or IC416 cooling
- » S1, S4-40% (240 s/h), S4-20/40% (240 s/h)
- » Various types of mounting available
- » Smooth load braking preventing stress conditions



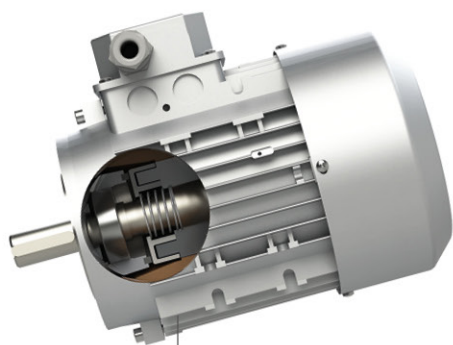
## LIFTING MOTORS

Series CAT

### For driving main & auxiliary hoisting motions

- » Power 1.1~15kW
- » IEC frames 90, 100, 112, 132 and 160
- » Poles 2, 4, 6, 8/2 and 12/4
- » Voltage  $\Delta/Y$  230/400V 50/60Hz
- » Brake coil voltage (VDC) 0.45 UAC (other on request)
- » Braking torque 1.5 x rated torque or higher
- » Protection up to IP65
- » Insulation F, H
- » 40 deg C ambient rating
- » IC410, IC411, IC416 cooling
- » S1, S4-40% (240 s/h), S4-20/40% (240 s/h)
- » Slow braking or precise, sudden load positioning

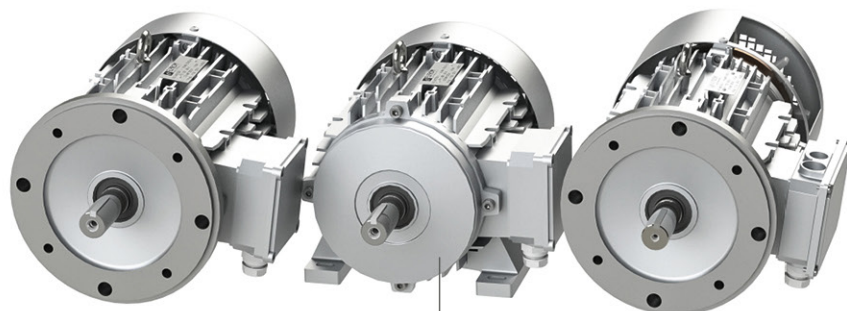
WE DRIVE MOTION



## MOTORS WITH A ROTOR BRAKE

### For machines with a long run-down times that cause production hold-ups or safety issues

- » Conforms to IEC 72 and IEC 34 standards
- » Existing IEC frame size usage with no dimensional change
- » On-shaft situated spring-actuated brake
- » Engagement in case of a power failure
- » No brake power supply wiring



## NEMA MOTORS

### Employed in multipurpose direct line- or inverter-fed applications

- » Standard NEMA mounting and shaft dimensions
- » TEFC, aluminum die-cast body with cast-iron C-flanges
- » Frames 143~215C
- » Range 0.75~7.5HP (S1), 230/460V, 60Hz (usable at 50Hz)
- » Single- or 3-phase, 2- and 4-pole
- » Easy F1, F2, F3 feet conversion
- » Rotatable terminal box
- » 1.0 and 1.15 service factor
- » 40 deg C ambient rating
- » Up to IP65 protection
- » Insulation F, H





## AUTO REPAIR SHOP MOTORS

Designed for door openers, car ramps and lifting mechanisms

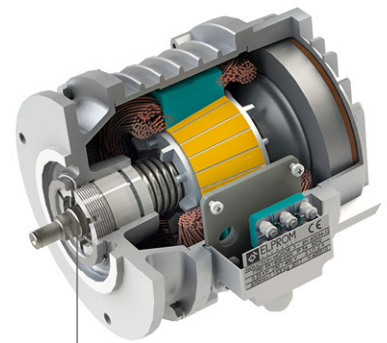
- » Frames 80, 90, 100
- » Rating 1.5~4kW
- » Duties S2-5min, S3-20%
- » IP40 protection
- » Insulation F, H
- » Cylindrical or ribbed belt shaft ending or meeting customer specs
- » Face mounted
- » Meeting EU safety requirements



## HYDRAULIC PUMP MOTORS

To operate immersion or dry installed hydraulic pumps

- » Rating up to 11kW
- » IEC 72 sized 80, 90, 100, 112 (in frame-less and housed design)
- » Protection IP00, IP54 up to IP65
- » S1, S2-2min, S3-40% duration
- » Feet and/or flange mountable (square flange optional)
- » Dual flanges and working shafts
- » A variety of shaft endings (screw, split, hollow, etc.)
- » 2- or 4-pole windings
- » Insulation F, H
- » Supplying Y 400V, 50Hz or as required
- » Low-noise emission operation



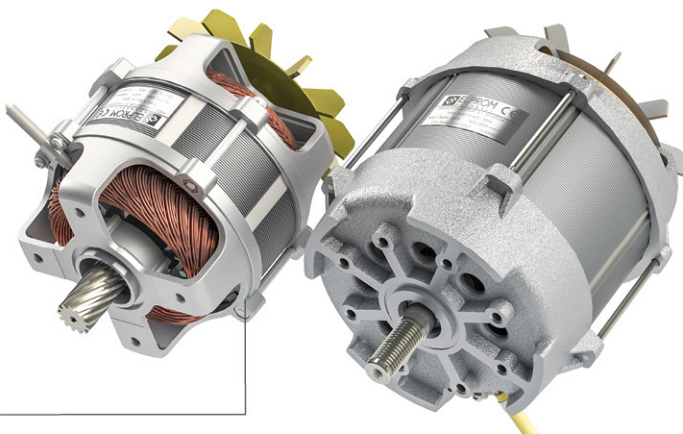
## CONICAL BRAKE MOTORS

Series KK1405/07

Applied in cross & long travel geared motions

- » Compact & robust design
- » Low-vibration cast-iron enclosure
- » Overload endurance
- » Output 0.37~0.55kW
- » Poles 4, 6, 12/4
- » Voltage  $\Delta/Y$  230/400V, 50/60Hz
- » IP54 protection
- » Insulation F, H
- » 40 deg C ambient rating
- » S1, S4-40% (240 s/h), S4-20/40% (240 s/h)

[www.elprommotors.com](http://www.elprommotors.com)

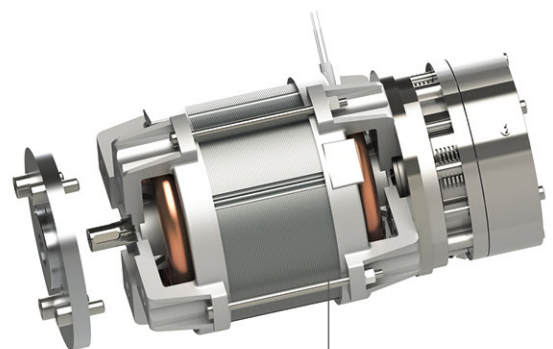


## MOTORS FOR GRINDERS AND POLISHERS

Series FT

Applied in rotary and walk-behind concrete machinery

- » Frames 100, 112, 132
- » Rating 0.8~11kW, single- or multi-speed
- » S1 or periodic duty
- » Insulation F, H
- » 1- or 3-phase, 110V, 115V, 230V, 240V, 400V, 50/60Hz
- » Thermostat or PTC overload protector
- » IP00 or IP55 execution
- » Belt, chain, gear or direct coupling adopted shaft
- » Frequent overload resistance
- » Over-sized bearings for greater vibration durability
- » Sustainable performance on lower supplying voltage
- » Two speed with high torque preservation
- » CE marking



## OIL-BATH ACTUATOR BRAKE MOTORS

For car park barriers & road blockers

- » Frame 80 with no protection from solids
- » Custom face mounting and front shaft extension
- » Output up to 1.5kW and above
- » S3-50% Duration
- » 2-, 4- or 6-pole designs
- » Insulation F, H
- » Voltage Y 400V, 50Hz (other on request)



## GEARBOX MOTORS

Found in all branches of industry

- » Power 0.18~15 kW
- » Helical, bevel, worm and parallel shaft geared motors
- » IEC, NEMA Motor Flange
- » One/double sided metric/Inch solid output shaft
- » Solid or hollow motor shaft
- » Various Input/Output Speeds and Torque Ratios
- » Aluminum gearbox housing



## DUAL SHAFT MOTORS

To operate automatic winding machinery

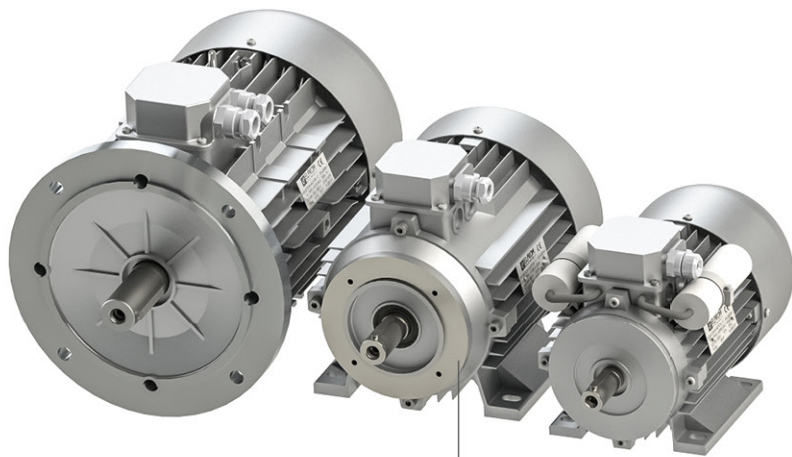
- » Stud mounted, compact design for limited spaces
- » Lightweight and low inertia
- » Uniformity of parts
- » Adopted to customer-provided specs
- » 3-phase supply
- » Insulation F, H
- » CE marking



## THEATER AND STAGE MOTORS

For auditorium curtain motion systems & stage rigging

- » Power 0.12~5.5kW
- » Compact, space-saving construction
- » Low-noise, smooth rotation, stops and starts
- » Flexible plug-in installation
- » Inverter compatibility and built-in encoder
- » Non-ventilated (S3 - operations)
- » Overheat PTC protection

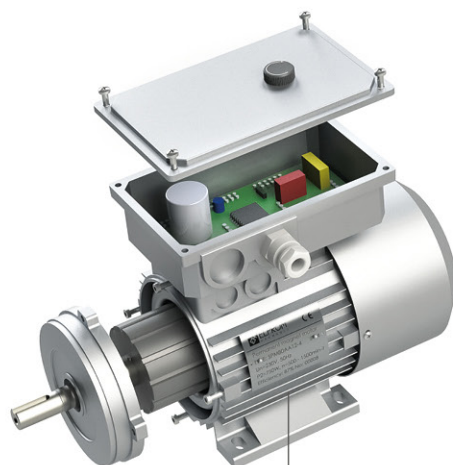


## HIGH-EFFICIENCY MOTORS

Series AT, AR

For all industrial applications

- » In compliance with IEC standards
- » Output 0.18~30kW
- » Voltage 230/400V, 50/60Hz (other on request)
- » Protection IP54 or higher
- » Mounting B3, B5, B14, B35, B34
- » Rated at an ambient of 40 deg C or higher
- » Manual reset overload (optional)
- » Thermostat or PTC thermistor protection
- » Rotatable terminal box & removable feet
- » Tropical execution
- » Inverter controllable on request
- » Frames 63, 71 up to 180
- » IE1, IE2, IE3, IE4 available
- » Poles 2, 4, 6, 8
- » Single-phase (frame size 63~100)
- » F, H insulation
- » Cooling IC410, IC411 or IC416



## MOTORS WITH BUILT-IN INVERTERS

Series SPM80

Applicable to heating, ventilating & air conditioning systems

- » Metric IEC motor features
- » Rates 0.55 to 5.5kW, 50/60Hz and above
- » High speeds up to 6000 r/min
- » 2-, 4-, 6- to 12 Poles
- » Meet IE4 efficiency criteria
- » Box-integrated or rear-shield placed inverter control
- » High power-to-weight ratio
- » Cost-reducing speed control
- » Settings to client's needs